



HILLSDALE'S INVESTMENT IN THE YOUTH OF THE COMMUNITY, AS SEEN FROM THE AIR, LOOKING WEST

HILLSDALE HIGH SCHOOL

OPEN HOUSE



Sunday, December 18, 1960 - 1:00 to 5:00 p. m.

An Expression of Thanks

The citizens of the Hillsdale Community Schools District have always provided their children excellent educational facilities. Today, at Open House, we are proud to show our latest building, a new senior high school. Thanks go to all of those citizens who through the years have contributed their time and efforts to make this building possible. These contributions, material and otherwise, represent hundreds of individuals, old and young, who believe in good schools.

This investment in the future of our community and nation is inherent in our American way of life. The young men and women who pass through the halls of this high school represent all of us. Their contribution as citizens in the years to come will be the finest tribute that can be paid to our patrons who made this building possible.

BOARD OF EDUCATION



ADMINISTRATIVE OFFICES—COUNSELING—FRONT OF BUILDING

Hillsdale's Record . . .

. . . one to be proud of

A far-sighted school board and administration presented a Building and Site Fund of 3½ mills for five years in 1945 to the citizens of this community. This Building and Site Fund was approved and in 1950 this same Building and Site Fund was voted again for 10 years by the people. In 1955, after study by a Citizens' Committee, it was voted to raise the Building and Site Fund to 5 mills for five years, which was the legal limit. The above funds enabled the District to build the Gier School, two four-room additions and a room at Osseo.

By 1958 the picture had changed and growth was more rapid than anticipated so that a new Citizens' Committee studied the need for future buildings and recommended a bond issue for a new high school. This was recommended on the basis of keeping the same rate for the new building as had been levied for the Building and Site Fund. The Board of Education accepted their recommendation and on June 9, 1958, a record number of voters approved the bond issue for the erection of a four year high school on the Norwood Field Site to accommodate 850 students. Part of this issue also included modernization of lighting in the present Davis, Mauck, Osseo and Bailey schools. The citizens who gave of their time for the 1955 vote and the 1958 vote are hereby listed below:

1955

David Arnt, Chairman

Harold F. Brown
Mrs. Charles P. Cook
Mrs. Emil M. Fry
Perry Gray

Herbert Hale
Mrs. Arthur Gambill
Keith Hawley
Mrs. William MacRitchie

Richard Morlock
Ernest Ringenberg
Rev. Marvin Sielken
Virgil Worley

1958

Dr. Charles Coy, Chairman

Robert Applegate
Alva Bates
Richard Drake
Harold Foulke
Mrs. Emil M. Fry

Vernon Gaberdiel
George Gelzer
William Gillette
Russell Huffman
James Inman

Mrs. Mark Sikorski, Secretary

Ambrose LoPresto
John A. MacNeal, M.D.
Mrs. Victor Moore
Mrs. William MacRitchie

Roswell Tillman, Original Chairman



TERRAZZO CORRIDORS AND SKYLIGHTED HALLS

Hillsdale Community Schools

Board of Education 1960-61

Albert W. Dimmers	-	-	-	-	-	-	-	-	President
Ralph H. Bach	-	-	-	-	-	-	-	-	Vice President
Martha B. Peterson	-	-	-	-	-	-	-	-	Secretary
Harold Ridley	-	-	-	-	-	-	-	-	Treasurer
Roger Losey	-	-	-	-	-	-	-	-	Trustee
C. C. Auseon, D.O.	-	-	-	-	-	-	-	-	Trustee
A. W. Strom, M.D.	-	-	-	-	-	-	-	-	Trustee
Doyle H. Jessen	-	-	-	-	-	-	-	-	Member during planning and construction

Administration

William A. Poppink	-	-	-	-	-	-	-	-	Superintendent of Schools
Edwin C. Henry	-	-	-	-	-	-	-	-	Senior High School Principal
Charles Boyse	-	-	-	-	-	-	-	-	Davis Intermediate School Principal
Anna C. Betts	-	-	-	-	-	-	-	-	Gier School Principal
Vernon B. Dunham	-	-	-	-	-	-	-	-	Bailey and Mauck School Principal
Doris Young	-	-	-	-	-	-	-	-	Osseo School Principal
Eleanor J. Older	-	-	-	-	-	-	-	-	Curriculum Coordinator K-8

Faculty

Edwin C. Henry, Principal

Thomas W. Arch	Lowell M. Green	Carolyn Masterson
Gerald Bambacht	Lyle H. Gustafson	Lloyd Morningstar
Isabelle S. Cutting	Doris S. Hayes	Elizabeth L. Nickols
Harry L. Dickinson	Duane C. Hocking	Earle E. Richardson
John L. Donnelly	Russell L. Huffman	Charlie S. Rouch
Arvid E. Erholtz	James R. Inman	Elizabeth L. Russell
E. Verne Fredlund	Ralph O. Ketrow	Hattie Marie Spiteri
Curtis L. Gale	Jack W. Lint	Vernon D. Stevens
Robert W. Gorton	Robert M. Lint	William F. Wilson
Donald J. Gray	Walter M. Martinen	

Secretarial Staff

Berenice L. DeVoe

Aleta Frantom

Custodial Staff

Orville A. Little, Engineer
Robert L. Easterday
Willard C. Lamb

Clifford C. Tyler
Claude C. Woodard

Cafeteria Staff

Thelma Wirick, Manager
Loraine Emens

Charlene Hawley
Bertha Hinkle

General Information

The Educational Program

This high school is located on a 40 acre site two blocks from the Davis School. The running track, built on the site several years ago, and proposed recreational facilities will be used by both schools.

The school was designed with the Library as the center of academic learning. This is located in a quiet area which separates the common learning classroom wings from the more noisy recreational areas of the building. Instructional areas are shown in the following groups:

- A. Social Studies, English, Mathematics, Commercial and Language
- B. Science, Shops, Homemaking and Art
- C. Cafeteria-Student Commons, Food Service and Library
- D. Recreation and Physical Education
- E. Choral and Instrumental

Administration in the front of the building is easily accessible from the street for the public as well as from the academic wings for the students. Bus loading is accomplished at an area behind the school so that the flow of students in and out of the building will be at several exits rather than at one congested point.

Future expansion is possible at the common learning classroom wings and at the shop and science area as well as at the music area. Zoning of the building allows for use of various areas of the building by the community without opening the entire building for a community function.

Finance and Building Data

Receipts		Expenditures	
Bond Issue	\$1,780,000.00	Basic Contracts, Architects Fees	\$1,794,663.95
Accumulated Interest	14,045.18	Bond Payments—First Payments	32,846.12
Interest on Investment of Bond Issue	69,576.35	Supervision and Insurance	12,373.45
Interest on Investment of Former Building & Site Fund	10,100.58	Legal Fees and State Fees	4,030.21
Former Building & Site Balance (July 1, 1959)	219,106.63	Re-lighting other schools 1958	12,317.21
Gifts, Rentals and others	4,438.95	Sewer, Curb and Gutter, Sidewalk	6,463.00
	<hr/>	Equipment, including bleachers, library, cafeteria, kitchen, science rooms, Home Economics (estimated)	230,000.00
	\$2,097,267.69	Site work to be completed	4,573.75
			<hr/>
			\$2,097,267.69
Size of Site	40 Acres	Cubic foot cost	\$.87
Capacity	850 Pupils	Date contract was awarded	April 17, 1959
Area of Building	118,984 sq. ft.	Ground Breaking	April 21, 1959
Volume of Building	1,886,755 cu. ft.	Building Opened	September 7, 1960
Space per pupil	135 sq. ft.	Open House	December 18, 1960
Square foot cost	\$13.82	Enrollment 1960-61	600 Pupils, grades 9-12



A TYPICAL ACADEMIC CLASSROOM



LANGUAGE LABORATORY



SPACE FOR TEACHING FIFTY STUDENTS



THE LIBRARY — THE HEART OF OUR SCHOOL



GENERAL SHOP CLASS



VOCATIONAL AGRICULTURE



CHEMISTRY — ONE OF FOUR SCIENCE ROOMS



CREATIVE WORK IN THE FINE ARTS



BAND AND ORCHESTRA



HOMEMAKING



BIOLOGY



CAFETERIA, STUDY HALL, AUDITORIUM AND COMMONS

About The Construction

The Architects

WARREN HOLMES COMPANY - - - - - Lansing, Michigan

The Contractors

General - - - - - Spence Brothers, Saginaw, Michigan
Electrical - - - - - Dunn Electric, Ann Arbor, Michigan
Plumbing and Heating - - - - - J. A. Dart, Mason, Michigan
Representing the Board of Education on Supervision - - - - - Orville A. Little

Technical Data

Type of Construction:

Frame—steel
Foundations—poured concrete
Floor—concrete slab on fill
Exterior Walls—face brick and insulated panels
Windows—aluminum
Floor Materials, Foyers, corridors and toilets terrazzo; classrooms—asphalt tile; locker rooms—ceramic tile; gymnasium—wood.
Ceilings—acoustic plaster except in gymnasium and library where exposed construction is used.

Walls, Corridors and Foyers — brick and wood; classrooms — slag block and steel studs with plaster; toilets and shower rooms wall tile.

Mechanical systems:

Heating and ventilating—gas-oil fired low pressure steam boilers with unit ventilators.

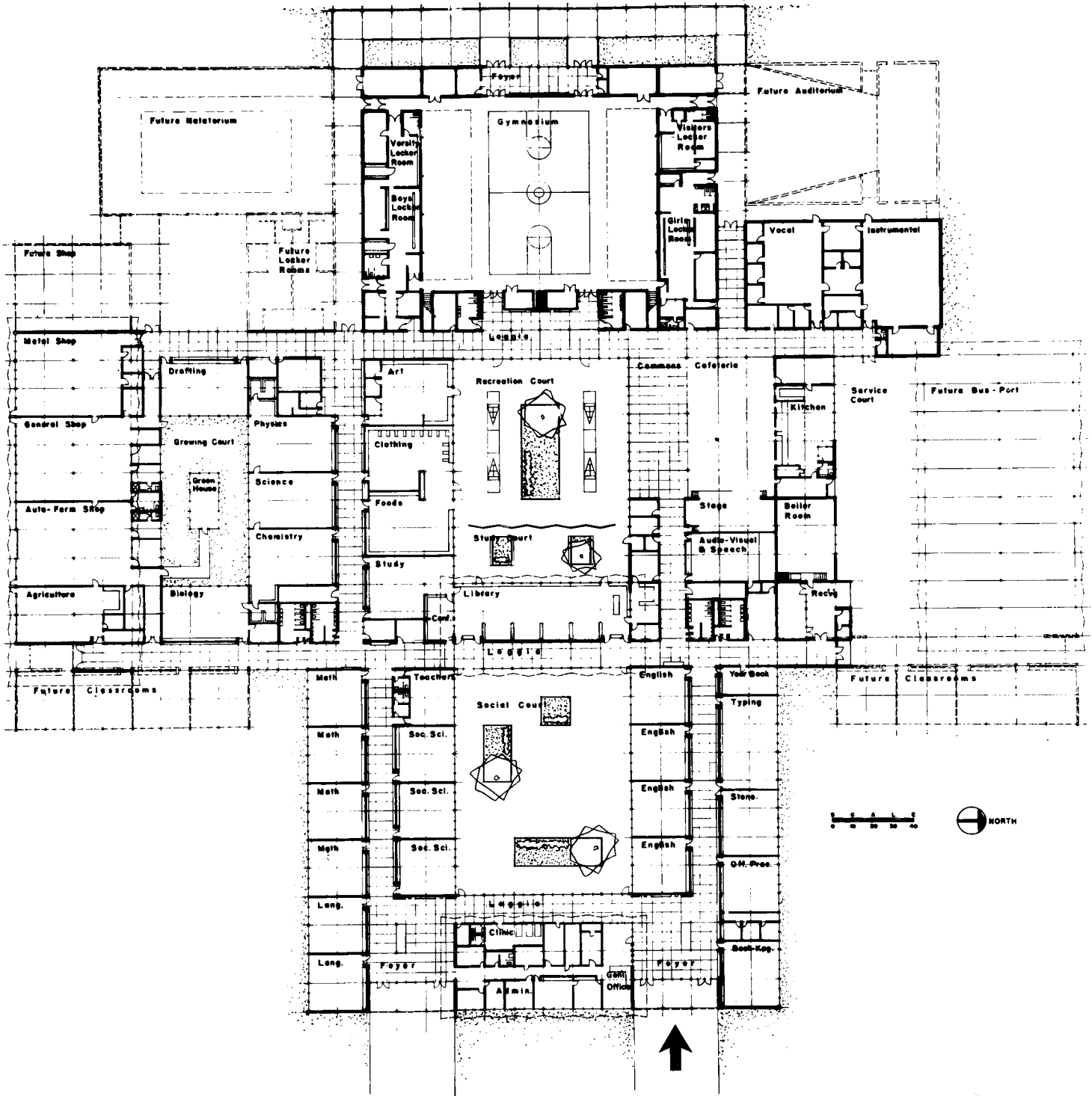
Electrical systems:

Fluorescent lighting except in special areas where recessed incandescent is used.

Hillsdale School Buildings

Old Junior High (South End of Davis)	1905	Gier Elementary School	- -	1953
Osseo Elementary School	- - 1924	4 Room Addition to Gier School	-	1955
Davis Intermediate School	- - 1929	4 Room Addition to Gier School	-	1958
Bailey Elementary School	- - 1937	Osseo School — 1 room addition	-	1959
Mauck Elementary School	- - 1939	New High School (Grades 9-12)	-	1960

Map for Guided Tour



Tour Starts Here



CHORAL ROOM



KITCHEN TO SERVE TWO SCHOOLS

Memorials and Gifts

Class of 1959	- - - - -	Court Landscaping
Class of 1960	- - - - -	Court Benches
Student Councils of 1959-60	- - - - -	Commons Furniture
Augusta Murdock Will	- - - - -	Gymnasium Gift
in Memory of Lorenzo Murdock		
Dr. and Mrs. C. W. Millard and Jeannine	- - - - -	Williamsburg Pictures
In Memory of John F. Isbell		
Simpson Foundation	- - - - -	Gymnasium Equipment
Kiwanis Club of Hillsdale	- - - - -	Recreation and School Property
Leighr A. Wright Post No. 53	American Legion - - - - -	American Flag
Michigan Bell Telephone Company	- - - - -	Flag Pole
Joseph and Gertrude Baumgarten Foundation	- - - - -	Bleachers for New Football Field

Open House Arrangements

Refreshments	- - - - -	High School P-TA
Guides	- - - - -	Senior students representing organizations
Parking	- - - - -	Hi-Y Club
Registration	- - - - -	Citizens Study Committee of 1958

From The Superintendent

This Open House marks the last stage of a program that started five years ago when the need for a new high school was first discussed. Since the passing of the bond issue board members, faculty members and others have been busy making plans, visiting schools, attending conferences, selecting equipment and all the many details that go with the planning of a new building. It has been work but it has been enjoyable work.

It is extremely difficult to give due credit and recognition to the many individuals and groups who made this a reality. There is one group, however, which deserves a tribute and that is the Board of Education. These men and women over the years have given unstintingly of their time and effort. Particularly do we commend those who started and continued the Building and Site Fund. Dr. James B. Conant, author of "The American High School" states that "an informed, alert school board" is one of the essentials of a good school system. Hillsdale has been fortunate in having had capable leadership, community financial support and the above described school board.

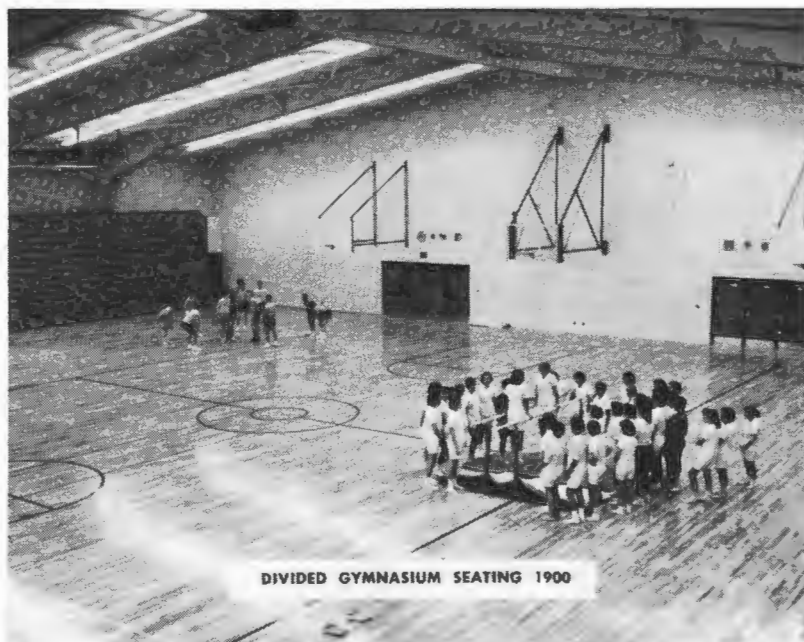
Another group, the recent Citizens Study Committee on Curriculum, has made an important contribution to our elementary and high school curriculums. Several of their recommendations are now in effect as a result of the new building.

The school has been designed to meet the educational needs and interests of pupils for a four year comprehensive high school. The quality of the building is in keeping with previous schools built in our school district. Long-range economy is provided through heat control zones, skylights, terrazzo corridors, plastered walls and other features. This building and the forty acre campus should serve this community for many years.

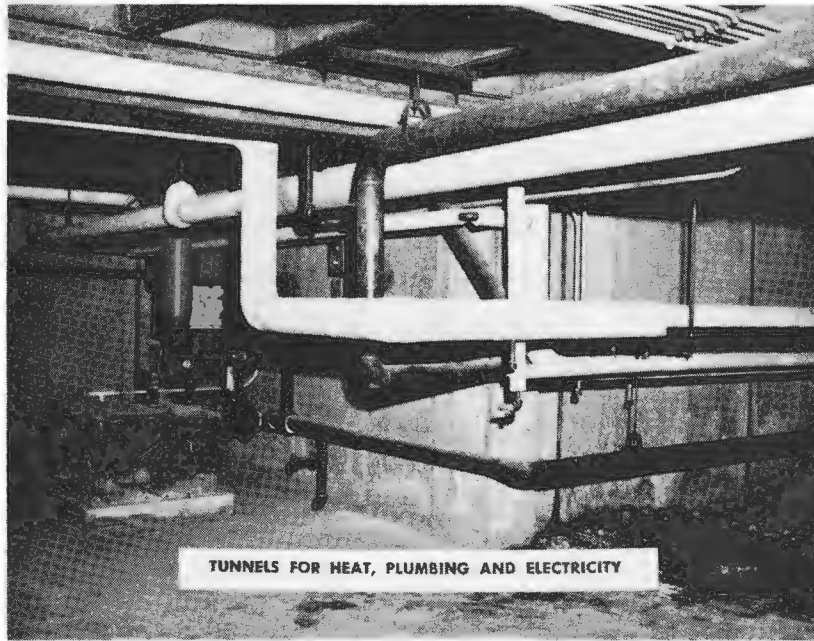
WILLIAM A. POPPINK
SUPERINTENDENT OF SCHOOLS



WEST COURT FACING LIBRARY WITH COMMONS ON LEFT



DIVIDED GYMNASIUM SEATING 1900



TUNNELS FOR HEAT, PLUMBING AND ELECTRICITY



LOOKING EAST FROM NEW BLEACHERS